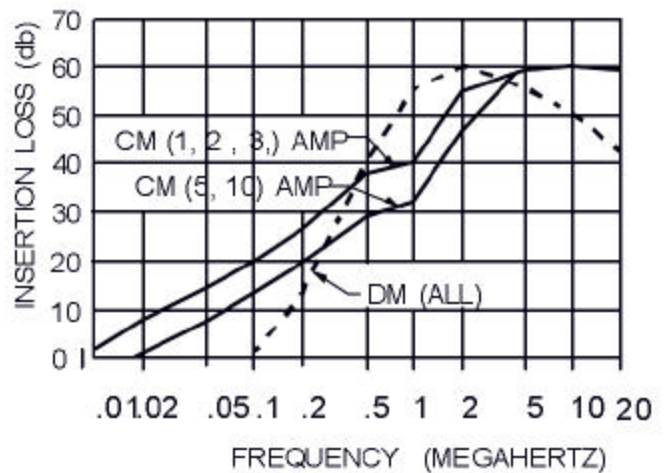
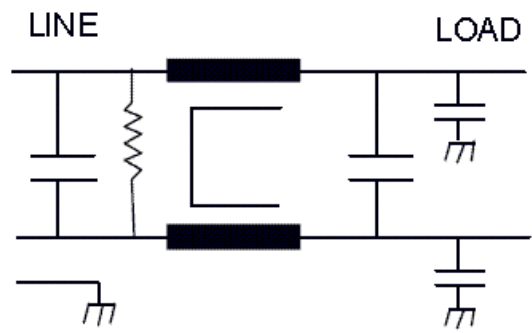




0221 SERIES

The 221 Series is designed to provide common-mode and differential mode filtering for power supply inputs of computer peripheral and other electronic hardware.

Operating voltage = 115/250 Vac
Operating current = 1, 2, 3, 5, 10 Amp
Operating frequency = 50/60Hz
Operating temperature = -20 to 50o C
Diel. withstanding (line - case) = 1500 Vac
Diel. withstanding (line - line) = 1500 Vdc
Leakage current = 0.5 ma at 250 Vac, 60 Hz
Max residual voltage after 1 sec. = 30 Volts
Agency approvals = UL, CSA



Ordering Information
AA-0221-X FF-0221-X (X = Current required)
Use AA for (0.25) tab terms
Use FF for leads

DIMENSIONS (INCHES)

	A	B	C	D	E
1, 2 AMP	2.00	2.38	2.78	.87	1.75
3, 5 AMP	2.00	2.38	2.78	1.13	1.75
10 AMP	2.00	2.38	2.78	1.13	2.00

